



The Center for Art
Culture & History
EXETER

March 2026

THE Exchange

A newsletter on the Art, Culture, and History of California's Heartland



CACHE Welcomes New Board Member



Miguel Pujol, new CACHE board member

CACHE is proud to welcome new board member, Miguel Pujol. Born in Argentina, Miguel first came to the United States at the age of 23, intending only to visit. Captivated by the country and its creative possibilities, he chose to make it his home. He initially settled in the San Francisco Bay Area, where

he studied Theology before embarking on a career in sales and marketing within the staffing industry, traveling extensively throughout California.

Five years ago, Miguel married his wife Jennifer, a lifelong Exeter resident and owner of Monet's Restaurant. He quickly fell in love with the Exeter community, which has since become both his home and a source of inspiration.

An artist for over fourteen years, Miguel has explored a wide range of creative forms and mediums. Over the past five years, he has devoted himself fully to acrylic painting, developing his style through self-study and hands-on experimentation. His work reflects a deep appreciation for the outdoors, atmosphere, craftsmanship, and story.

When not painting, Miguel can often be found restoring vintage trailers—another passion rooted in creativity and preservation—or supporting the local arts and hospitality scene through his work at Monet's Restaurant. His life and art are shaped by travel, faith, community, and a continual pursuit of creative expression.

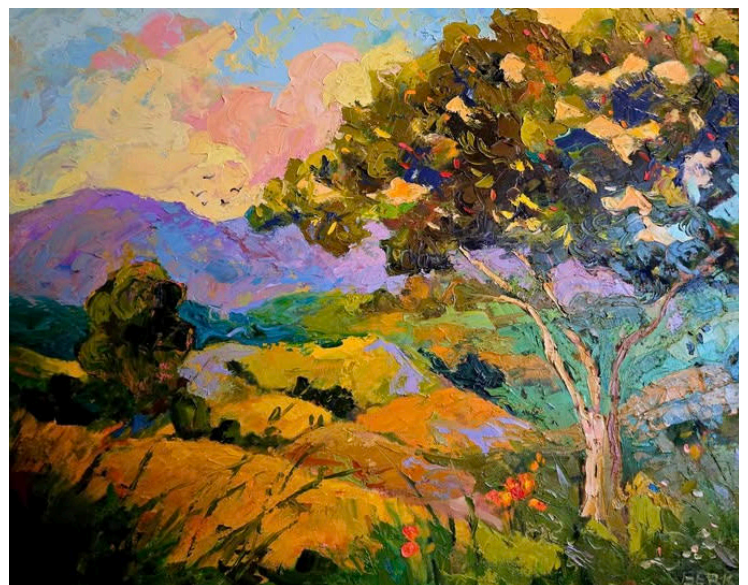
Upcoming Art Exhibition

CACHE will feature the solo show *California Landscapes* by Betty Berk, on exhibit from April 4 through June 28. The opening artist's reception is Saturday, April 4, from 4:30 PM to 6:30 PM.

Berk is a neo-Expressionist painter whose work emphasizes texture and color. She taught art at Dinuba High School for over 20 years, where she developed a city-wide Festival of the Arts that highlighted fine arts throughout Dinuba schools. She also served as the Director of Exhibits for Alliance of California Artists.

She has studied classical piano for nearly fourteen years and describes her art as colorful expressions of the classical pieces she plays.

Berk has won many awards and shown throughout the San Joaquin Valley for over thirty years. Her work can be found on Facebook and Instagram.



Betty Berk, Oak Tree in the Foothills, oil on canvas, 24"x30"





The Center for Art
Culture & History
EXETER

559-592-5900 • info@cach-exeter.org • www.cach-exeter.org
125 S. B St., P.O. Box 253, Exeter, CA 93221
Open Wed, Thurs, Fri 10am-4pm • Sat & Sun 12pm-4pm
Closed Mon & Tue

THE
Exchange



cachexeter



Merrymans of Marinette



Attendees at February's *Tales of Exeter and Beyond* with Dwight Miller

CACHE had a wonderful turnout on Monday, February 16, for the latest talk from the series CACHE Chats: *Tales of Exeter and Beyond* with Dwight Miller. The discussion was *The Merrymans of Marinette: The Men Who Bankrolled Exeter's Citrus Boom*.

Thank you to all who attended including five Dungan family members. Brothers Smith Dungan and Cliff Dungan were managers and key people in Merryman's Bonnie Brae farming operation. Louise Andreson Greene, the great-granddaughter of A.C. Merryman, was also there to show her support.

Stay tuned for announcements for the next history talk scheduled for May 18.

South Valley Art Tour

Don't forget to join us at CACHE for the annual South Valley Art Tour! The SVAT is Tulare County's widest-reaching art event and will be on March 28 & 29 from 10 AM to 5 PM.

"Each year, the Arts Consortium organizes a self-guided tour through artists' studios located south of Highway 198. During the tour, participants are introduced to the art spaces of both nationally recognized and emerging Valley artists. The tour provides an opportunity for the public to learn more about the talented art professionals working behind the scenes in our area. The artists produce a broad range of artwork, from paintings and woodwork to resin casters and jewelry. One may even find the perfect piece of art to take home!" https://issuu.com/lifestylemagazine/docs/lsmarch23_issuu/s/19693453

CACHE artists include Denise Albright, Miguel Pujol, and Marty Weekly. Albright, who is known for her whimsical watercolor paintings, will demonstrate

her personalized techniques. Pujol will allow visitors a look inside his world of acrylics and deep imagination, while Weekly's rich oil landscapes are sure to engage everyone attending.



MEET OUR BOARD of DIRECTORS



CACHE is governed by a volunteer nonprofit Board of Directors established by its bylaws, reflecting our desire to create transparent and accountable governance. These hardworking board members seek to bring quality programming and professional oversight to our organization. Above: Dwight Miller, President; Robyn Stearns, Vice President; Laurie Hamilton, Treasurer; Patty Spott, Secretary; Charles Stearns, Member; Lana Brown, Member; Miguel Pujol, Member.

