



The Center for Art  
Culture & History  
EXETER

December 2025

# THE Exchange

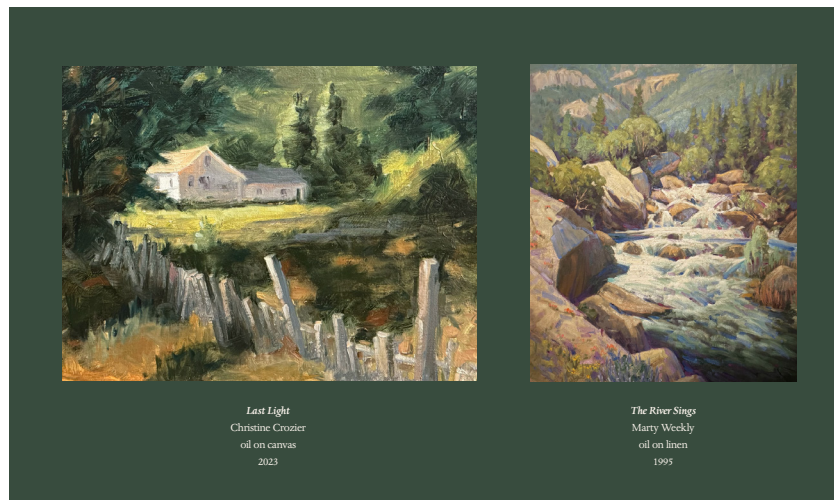
A newsletter on the Art, Culture, and History of California's Heartland



## Christine Crozier & Marty Weekly are *Still at It*

CACHE will be hosting a duo exhibition titled Christine Crozier & Marty Weekly: *Still at It*, featuring the paintings of Crozier and Weekly. The exhibit will be on display from December 4 to 27. An opening reception will be held on Thursday, December 4, from 4 PM to 8 PM.

Christine Crozier took an oil painting workshop with Marty Weekly in 1989 and has been painting California landscapes with him ever since. Her artwork is noted for its expressive brushwork and rich colors, which invite the viewer to see the magic in ordinary moments. "When artists are inspired by the natural world, their work can inspire others in much the same way nature inspired them," says Crozier. Her award-winning



### Christine Crozier & Marty Weekly

## STILL AT IT

DECEMBER 4 - 27 | 2025

Artists' Reception:  
THURSDAY, DEC 4, 4-8 PM

125 SOUTH B STREET, EXETER, CA 93221  
WWW.CACH-EXETER.ORG | (559) 592-5900



paintings have attracted collectors throughout North America, Europe, and the South Pacific. Marty Weekly enjoys creating

and open to the public. For more information, visit our website at [www.cach-exeter.org/events](http://www.cach-exeter.org/events)

abstract patterns using oil paint with loose brush strokes that produce recognizable images most often found in nature. The viewer's eye mixes the abstracted patterns, which creates an effect of realism—the viewing process is what completes the painting. Weekly has exhibited in prestigious galleries throughout the western U.S. and owned a gallery in Carmel for eight years, where he exhibited work by talented artists, including Crozier. This exhibit recognizes just how important nature is in our lives and how we suffer from our separation from it in the modern world.

The event is free





The Center for Art  
Culture & History  
EXETER

559-592-5900 • info@cach-exeter.org • www.cach-exeter.org  
125 S. B St., P.O. Box 253, Exeter, CA 93221  
Open Wed, Thurs, Fri 10am-4pm • Sat & Sun 12pm-4pm  
Closed Mon & Tue   cachexeter

# THE Exchange



## CACHE Supporter of the Month

This month we are highlighting board member Charles Stearns. Charlie helps maintain the CACHE historic building with his extensive knowledge in irrigation and roofing. Thank you for all that you do!

Charlie's citrus farming family moved to Exeter from Anaheim in 1964. He attended Wilson Middle School and graduated from EUHS in 1971. He was drafted into the US Army and served for two years at the close of the Vietnam War. Charlie attended COS and the University of the Pacific, Stockton, where he earned a Doctor of Pharmacy degree in 1980. In years past, he worked in numerous retail pharmacy settings, including Visalia and Porterville Save Mart and twenty years at Visalia Costco. Stearns has had various additional jobs, including LoBue Bros. citrus field and packing house manager assistant (1980s-90s); and working seasonally for Kings Canyon National Park as a trail laborer and supervisor (1974-1980). He was an Exeter City Council member from 1986 to 1994.

Charlie has been married to his wife, Patty, for 43 years, and they have a daughter, Sierra. As a lifelong ski enthusiast, Charlie enjoys being a ski instructor at China Peak. He also loves to birdwatch and identify birds by ear.

## Save the Date—Leadership Luncheon

It's almost that time of year again for our annual Community Leadership Luncheon. Save the date for Thursday, January 29, from 12 to 1 PM in our upstairs conference room. We look forward to connecting and supporting each other's missions.

## END-OF-YEAR GIVING CAMPAIGN

We would like to say how grateful we are for the support we receive from the local community through monetary contributions and volunteering throughout the year. While CACHE generates revenue from facility rentals and art sale commissions, we depend mainly on donations from generous supporters. Without you, we wouldn't be able to continue hosting quality art exhibitions, local history displays, or community events, so **THANK YOU all!**

CACHE is committed to building upon these successes and accomplishing even more in the upcoming year. Your contribution will be supporting our mission of bringing to life the art, culture, and history of California's heartland.

Please write your check out to CACHE and send to:

P.O. Box 253  
Exeter, CA 93221



or scan the QR code with your smartphone to access our donation page. You can also visit our website, [www.cach-exeter.org](http://www.cach-exeter.org), and click the "Donate" button. All amounts are welcome and do make a difference.

**WE APPRECIATE YOUR CONTINUED SUPPORT!**

*We are now set up to accept gifts from your stock portfolio. Please check with your tax and financial advisors for the best way to make a year-end gift. All gifts are tax-deductible. Our 501(3)(c) number is 84-3738093.*

## MEET OUR BOARD of DIRECTORS



CACHE is governed by a volunteer nonprofit Board of Directors established by its bylaws, reflecting our desire to create transparent and accountable governance. These hardworking board members seek to bring quality programming and professional oversight to our organization. Above: Dwight Miller, President; Robyn Stearns, Vice President; Laurie Hamilton, Treasurer; Patty Spott, Secretary; Charles Stearns, Member; Lana Brown, Member.